



Chaminade University
OF HONOLULU

Title III
Renovation Grant
EIBEN HALL

U.S. Department of Education

October 1, 2009 – September 30, 2011

EIBEN HALL Phase I

October 1, 2009 – September 2010

Eiben Hall Phase I

As is typically the case in a smaller, undergraduate-focused Title III designated university, Chaminade's ability to fully serve its students is constrained by limited resources to renovate and update older buildings and program facilities. The renovation grant concerned Eiben Hall, an 80 year old building that houses the Fine Arts, the Interior Design and the Communication and Marketing programs. The building is also the emergency campus assembly and command area in the case of a hurricane. The grant provided funding for the following areas: (1) improvement of Eiben Hall's infrastructure, particularly the roof, windows and air conditioning; (2) prepare the facilities that will house the teaching, production and support facilities for the Communication program; (3) update the information technology capabilities to support student and faculty coursework and production work in the academic Communication program as well as provide support for emergency communications.

EIBEN HALL Phase I

Eiben Phase I \$2,000,000 improvements included upgrades to technology, air conditioning system, interiors; a new communications classroom & workroom; roof replacement; emergency generator and fuel storage tank.



EIBEN HALL Phase I



EIBEN HALL Phase I



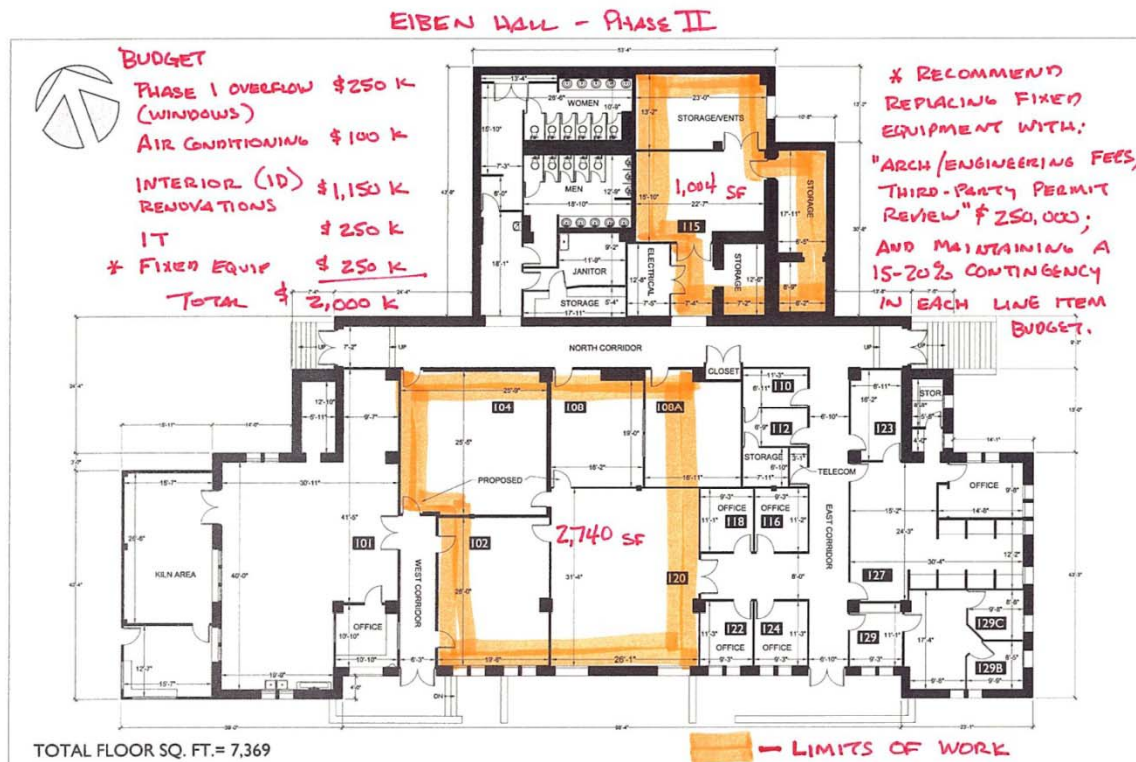
EIBEN HALL Phase II

October 1, 2010 – September 30, 2011

Eiben Phase II

This renovation grant funds the continuation of improvements to Eiben Hall. The grant provided funding for the following areas: (1) improvement of Eiben Hall's infrastructure, particularly the windows and air conditioning; (2) prepare the facilities that will house the teaching, production and support facilities for the Interior Design program; (3) update the information technology capabilities to support student and faculty coursework and production work in the academic Interior Design program as well as provide support for emergency communications.

EIBEN HALL Phase II



Chaminade University 3140 Waiialae Avenue Honolulu, HI 96816	Eiben Hall 3140 Waiialae Avenue Honolulu, HI 96816	Floor Plan Floor	Scale 0 10 20	2-D FLOORPLANS.COM 206-328-7410 fax 206-328-4764 1700 21st Avenue South Suite 100 Seattle, WA 98144 Measured: December 2006 Project: C6-264
Client	Subject	Floor	Scale	Measured: December 2006 Project: C6-264